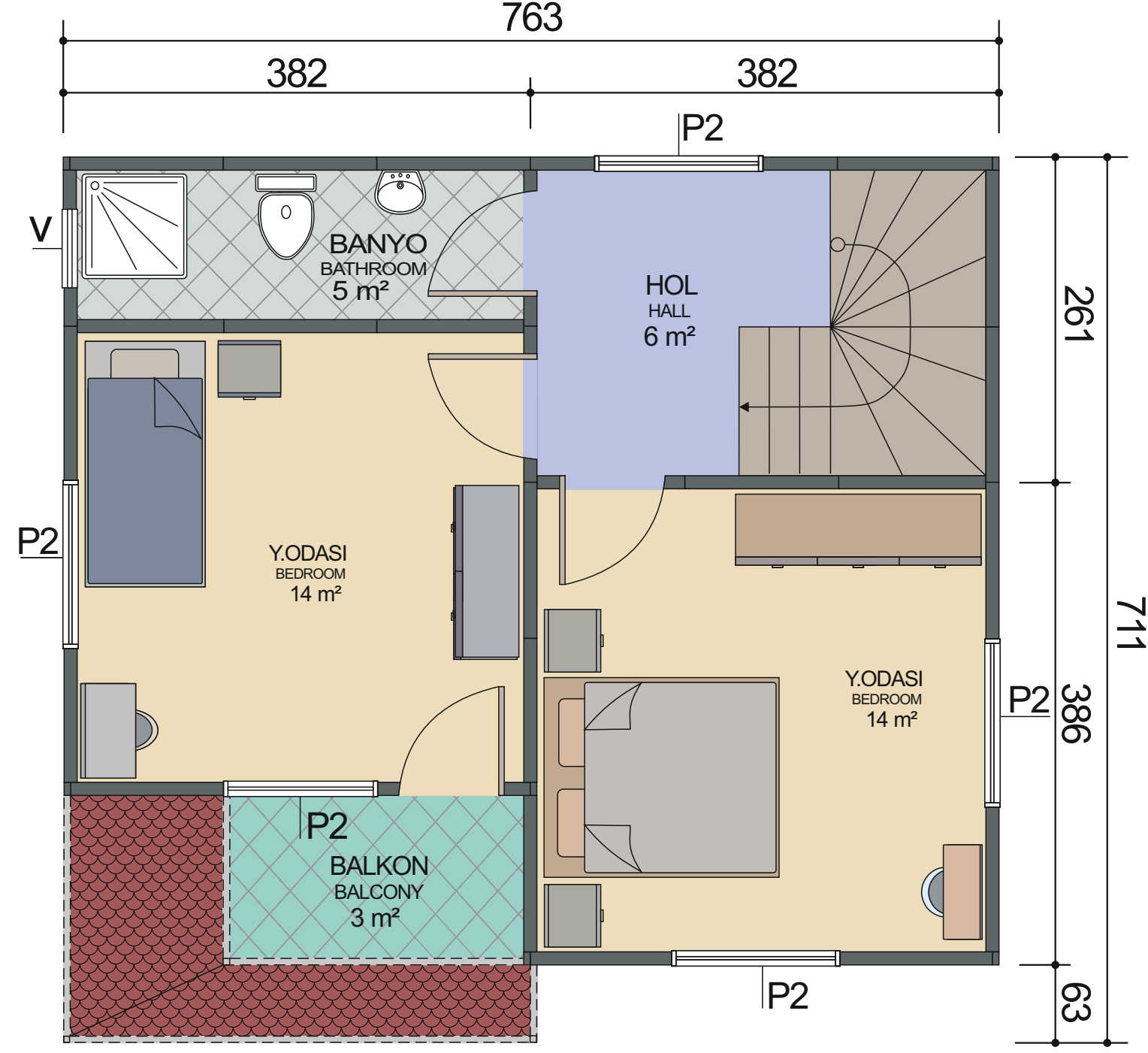


ZEMİN KAT PLANI
GROUND FLOOR PLAN
 $45 \text{ m}^2 + 7 \text{ m}^2 = 52 \text{ m}^2$



1. KAT PLANI
FIRST FLOOR PLAN
 $45 \text{ m}^2 + 3 \text{ m}^2 = 48 \text{ m}^2$